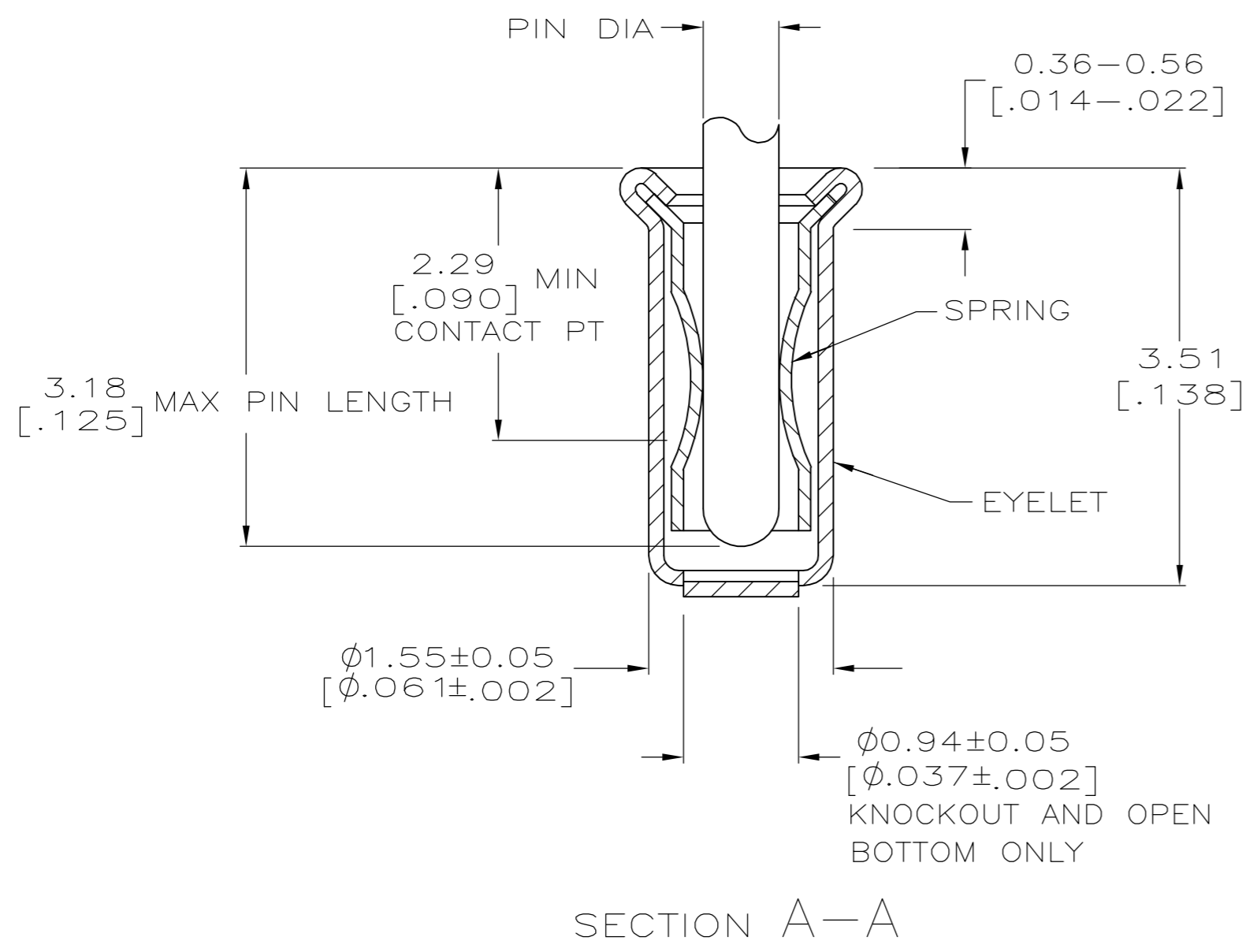
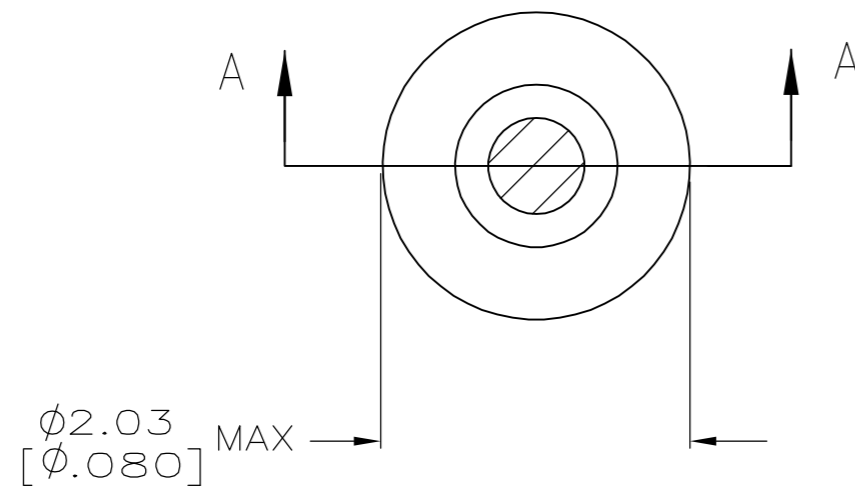


THIS DRAWING IS UNPUBLISHED. RELEASED FOR PUBLICATION
 © COPYRIGHT BY TYCO ELECTRONICS CORPORATION. ALL RIGHTS RESERVED.

LOC	DIST	REVISIONS					
GP	00	P	LTR	DESCRIPTION	DATE	DWN	APVD
		AR2		REV PER ECO-06-018765	13APR07	DH	DB

- 1. TIN PER MIL-T-10727 OR TIN LEAD 0.00254 [.000100] MIN THK.
- 2. GOLD PER MIL-G-45204, TYPE II, 0.00076 [.000030] MIN THK OVER NICKEL PER QQ-N-290 0.00028 [.000011] MIN THK ON CONTACT AREA.
- 3. GOLD FLASH PER MIL-G-45204, TYPE II, 0.13µm [.000005] MIN THK. OVER NICKEL PLATE PER QQ-N-290 0.51µm-1.52µm [.000020-.000060] EXT THK.
- 4. TIN PER MIL-T-10727 OR TIN LEAD 0.00381 [.000150] MIN THK.
- 5. RECOMMENDED HOLE SIZE, PLATED OR UNPLATED:
 MACHINE INSERTION: 1.57 +0.10 / -0.08 [.062 +.004 / -.003]
 HAND INSERTION: 1.60 +0.10 / -0.00 [.063 +.004 / -.000]
- 6. APPLICATION TOOL PART NUMBER: MACHINE NO. 682127-4
 INSERTION HEAD NO. 682039-3
- 7. TO INSURE PROPER SPRING TENSION DO NOT EXCEED A 0.05 [.002] DIFFERENCE IN PIN DIA WHEN CHANGING TO A SMALLER PIN.
- 8. BOTTOM PLUG KNOCKOUT TOOL PART NUMBER 69729 WITH TIP PART NUMBER 69728-1.
- 9. TIN PER ASTM B 545, 0.00254 [.000100] MIN THK.
- 10. MATERIAL: SPRING COPPER QQ-C-533
 EYELET: COPPER QQ-C-576



	9	CLOSED	0.76-0.84 [.030-.033]	TIN 9	TIN 9	8-331677-3
		OPEN	0.76-0.84 [.030-.033]	TIN 4	GOLD 2	7-331677-4
			0.76-0.84 [.030-.033]	TIN 1		7-331677-3
SUPSD BY 1-331677-8						7-331677-1
OBSOLETE		CLOSED	0.66-0.74 [.026-.029]		GOLD 2	3-331677-8
OBSOLETE			0.56-0.64 [.022-.025]	TIN 1	TIN 1	3-331677-7
OBSOLETE		KNOCKOUT	0.76-0.84 [.030-.033]			3-331677-5
OBSOLETE			0.66-0.74 [.026-.029]			3-331677-4
OBSOLETE			0.66-0.74 [.026-.029]			3-331677-2
			0.76-0.84 [.030-.033]	GOLD 3	GOLD 2	3-331677-0
			0.76-0.84 [.030-.033]			2-331677-9
			0.66-0.74 [.026-.029]			2-331677-7
			0.76-0.84 [.030-.033]			2-331677-6
			0.66-0.74 [.026-.029]			2-331677-4
OBSOLETE		OPEN				2-331677-3
SUPSD BY 50864-8						2-331677-2
			0.76-0.84 [.030-.033]	TIN 1	GOLD 2	2-331677-1
OBSOLETE			0.56-0.64 [.022-.025]		TIN 1	2-331677-0
OBSOLETE			0.76-0.84 [.030-.033]		TIN 1	1-331677-9
OBSOLETE			0.76-0.84 [.030-.033]		GOLD 2	1-331677-8
OBSOLETE			0.56-0.64 [.022-.025]	GOLD 3	GOLD 2	1-331677-7
OBSOLETE			0.76-0.84 [.030-.033]	TIN 1	TIN 1	1-331677-6
OBSOLETE			0.56-0.64 [.022-.025]	GOLD 3	GOLD 2	1-331677-4
OBSOLETE			0.76-0.84 [.030-.033]	TIN 1	TIN 1	1-331677-3
OBSOLETE			0.66-0.74 [.026-.029]	GOLD 3	GOLD 2	1-331677-1
OBSOLETE			0.66-0.74 [.026-.029]	TIN 1	TIN 1	1-331677-0
		BOTTOM TYPE	RECOMMENDED PIN DIA 7	EYELET	SPRING	PART NO
				FINISH		

THIS DRAWING IS A CONTROLLED DOCUMENT. DWN R. TALLEY 4-5-91
 CHK -
 APVD -

DIMENSIONS: mm [INCHES] TOLERANCES UNLESS OTHERWISE SPECIFIED:
 0 PLC ± -
 1 PLC ± -
 2 PLC ± -
 3 PLC ± 0.20 [.008]
 4 PLC ± -
 ANGLES ± -
 FINISH -

PRODUCT SPEC -
 APPLICATION SPEC -
 WEIGHT -

tyco Electronics Tyco Electronics Corporation
 Harrisburg, Pa 17105-3608

NAME: MINIATURE SPRING SOCKRT ASSEMBLY

SIZE: A2 CAGE CODE: 00779 DRAWING NO: C=331677 RESTRICTED TO: -
 SCALE: 1:1 SHEET: 1 OF 1 REV: AR2

CUSTOMER DRAWING